

# Closed Circuit Piston Motors SERIES PMH MT



## General informations

The PMH MT is a fixed displacement engine with axial pistons, it has a design of the oscillating plate specially designed for the oscillation of hydraulic excavators.

## The PMH M motor is complete with:

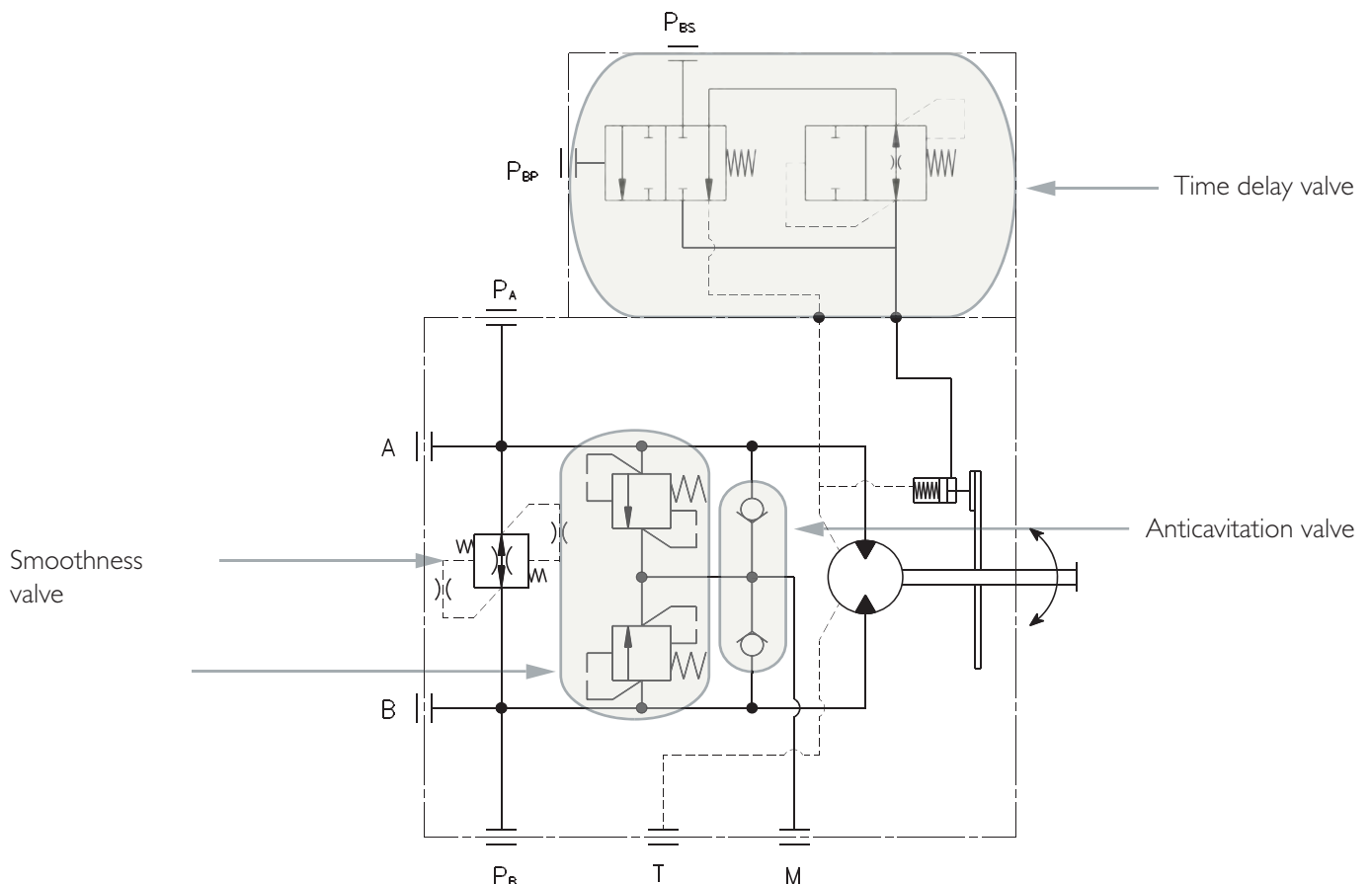
- Valve for negative hydraulic brake
- Anti-cavitation valves
- Anti-shock valves
- Sliding valve for the anti-overturning function

## Operating Parameters

Model			MT55	MT130	MT180
Displacement	V	cm <sup>3</sup>	55	130	180
Maximum speed	n <sub>max</sub>	rpm	2.500	2.000	1.700
Maximum flow	q <sub>max</sub>	l/min	140	260	305
Maximum pressure	P <sub>max</sub>	bar	400	400	400
Weight	M	Kg	30	59	73

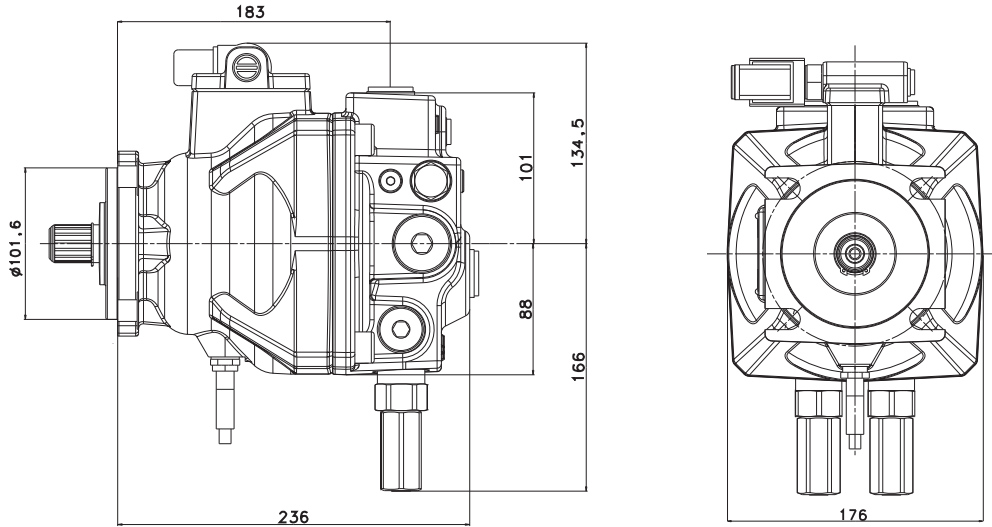
### Hydraulic diagram configuration

MT motors are equipped with the following valves as indicated in the hydraulic diagram



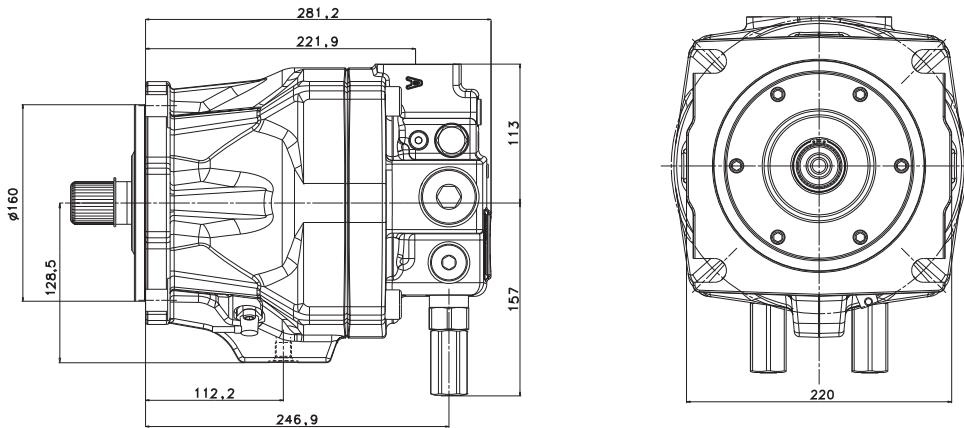
# PMH MT

Sizes 55



TYPE OF SHAFT		MOUNTING FLANGE	
<b>A25</b>	ANSI B92.1 15T 1/632 (ml.5875; D25.4)	<b>F1</b>	SAE J744 – SAE B 4 holes

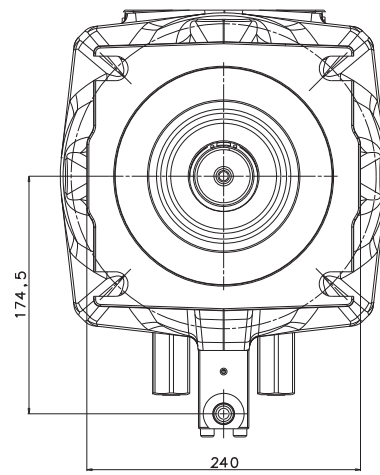
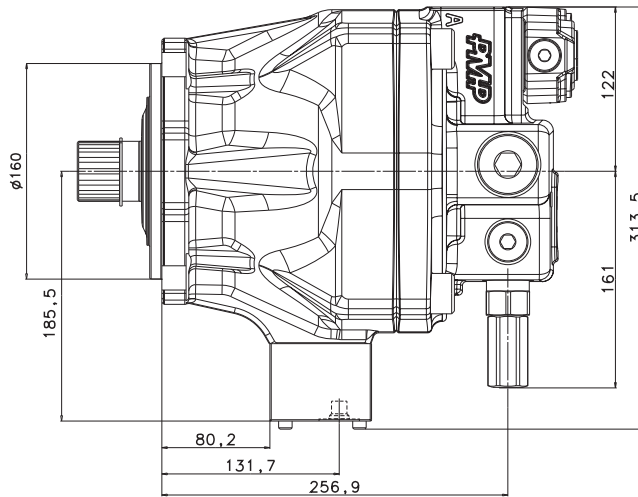
Size 130



TYPE OF SHAFT		MOUNTING FLANGE	
<b>J34</b>	JIS D2001 19T (ml.667; D34.7)	<b>F3</b>	Flange DI 60 – PC.D.224
Other shaft end standard available as per ordering code			

# PMH MT

Size 180



TYPE OF SHAFT		MOUNTING FLANGE	
<b>J44</b>	JIS D2001 16T (m2.5; D44.5)	<b>F3</b>	Flange D160 – P.C.D.224
<p>Other shaft end standard available as per ordering code</p>			

# Closed Circuit Piston Motors SERIES PMH MKF



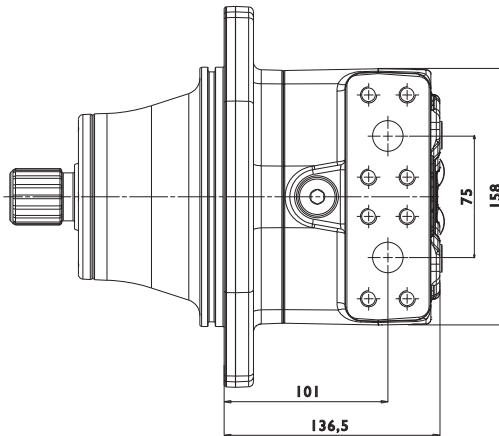
## General informations

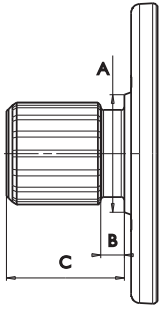
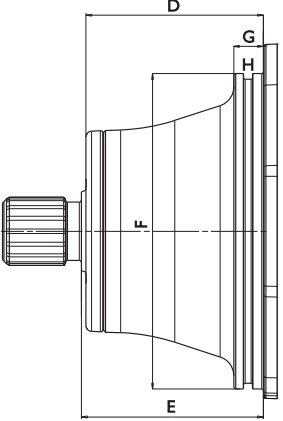
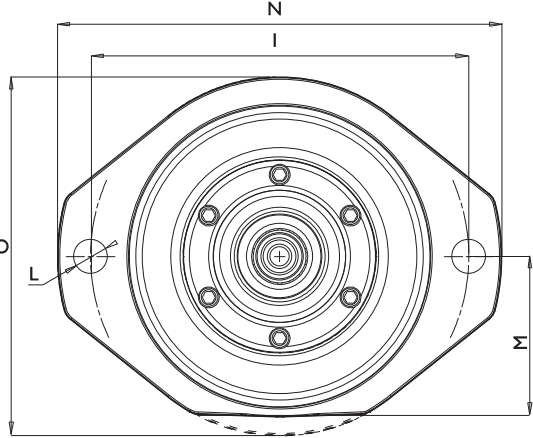
PMH MKF is a fixed displacement motor with axial pistons, for closed circuit systems. MKF engines have been developed for use on hydraulic transmissions, where high speeds and high torques are required.

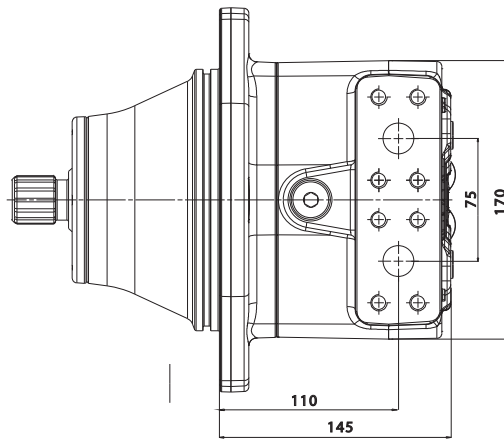
The small size allows for easy installation. PMH MKF motors are equipped with an integrated flushing valve which improves thermal performance especially in demanding applications.

## Operating Parameters

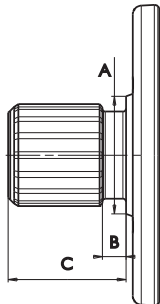
Model			MKF							
			47	55	63	72	90	110	130	180
Displacement	V	cm <sup>3</sup>	47	55	63	72	90	110	130	176
Maximum speed	n <sub>max</sub>	rpm	4.300	4.300	4.100	4.100	4.000	3.800	3.400	2.900
Maximum flow	q <sub>max</sub>	l/min	202	236	258	295	360	418	442	510
Nominal pressure	p <sub>nom</sub>	bar	400	400	400	400	400	400	400	400
Maximum pressure	p <sub>max</sub>	bar	450	450	450	450	450	450	450	450
Maximum power	P <sub>max</sub>	kW	108	127	139	159	187	223	236	272
Theoretical max torque	C <sub>max</sub>	Nm	300	350	405	460	570	700	828	1.100
Weight	M	Kg	25	25	27	28	36	36	42	55



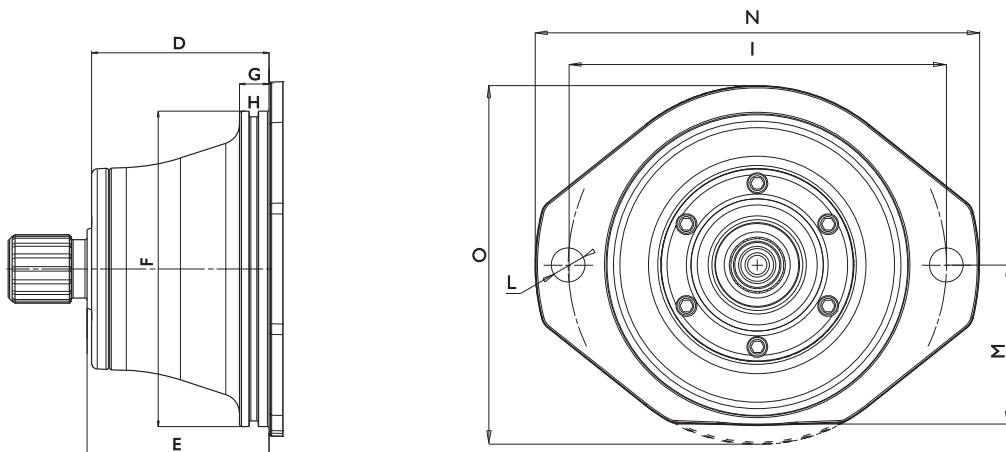
TYPE OF SHAFT												
		A	B	C								
<b>D30</b>	DIN5480 side fit W30x2x30x14x9g	Ø40	8	35								
<b>D35</b>	DIN5480 side fit W35x2x30x16x9g	Ø40	8	40								
												
MOUNTING FLANGE												
		D	E	F	G	H (groove for)		I	L	M	N	O
<b>A2</b>	Standard two bolts plug-in flange	90,0	92,3	Ø160	15	OR 4600	3,53x152	200	Ø18	85	235	Ø190
<b>B2</b>	Special two bolts plug-in flange	81,5	88,8	Ø135	15	OR 4500	3,53x126,6	160	Ø14	71	180	Ø154
												



TYPE OF SHAFT		A	B	C
<b>D30</b>	DIN5480 side fit W30x2x30x14x9g	Ø40	8	35
<b>D35</b>	DIN5480 side fit W35x2x30x16x9g	Ø40	8	40

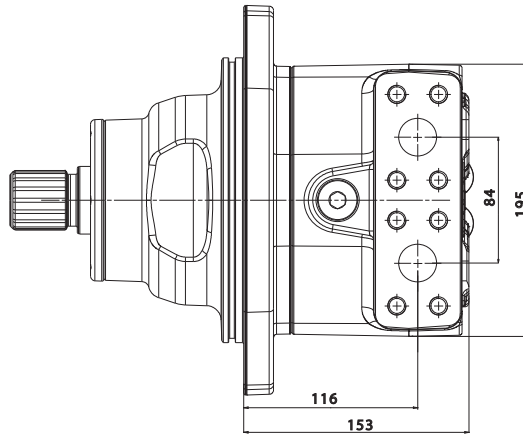


MOUNTING FLANGE		D	E	F	G	H (groove for)	I	L	M	N	O
<b>A2</b>	Standard two bolts plug-in flange	90,0	92,3	Ø160	15	OR 4600 3,53x152	200	Ø18	85	235	Ø190



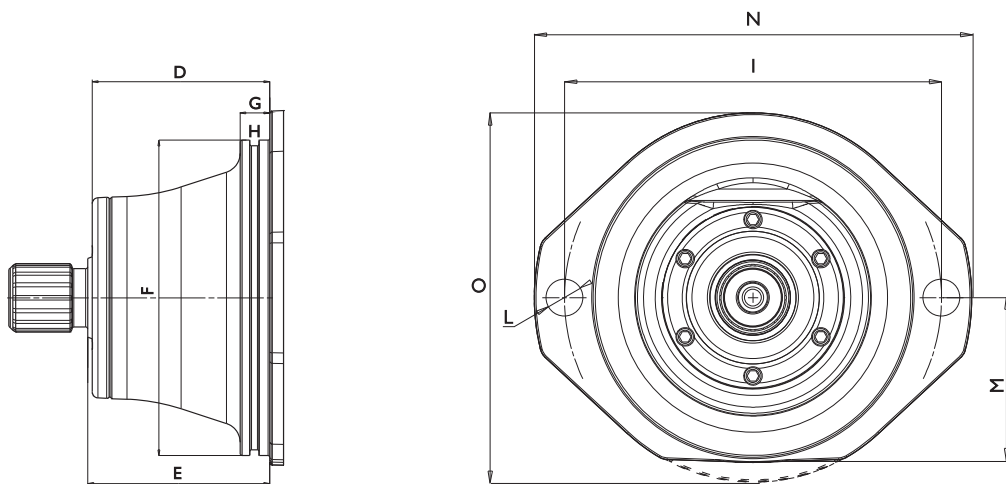
# PMH MKF

Size 90



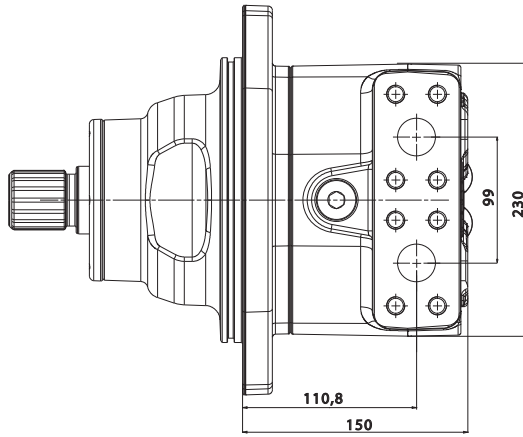
TYPE OF SHAFT		A	B	C
<b>D35</b>	DIN5480 side fit W35x2x30x1 6x9g	Ø45	8	40
<b>D40</b>	DIN5480 side fit W40x2x30x1 8x9g	Ø45	8	45

MOUNTING FLANGE											
		D	E	F	G	H (groove for)	I	L	M	N	O
<b>A2</b>	Standard two bolts plug-in flange	106,0	110,8	Ø190	15	OR 4725 3,53x183,8	224	Ø22	98	260	Ø220

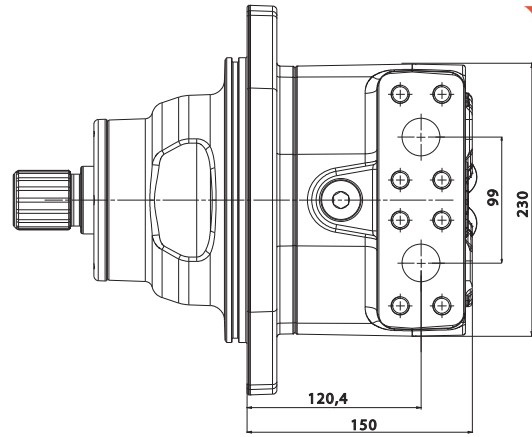


# PMH MKF

Size I10 / I30



MKF I10



MKF I30

TYPE OF SHAFT		A	B	C
<b>D40</b>	DIN5480 side fit W40x2x30x18x9g	∅ 50	8	45
<b>D45</b>	DIN5480 side fit W45x2x30x21x9g	∅ 50	8	50

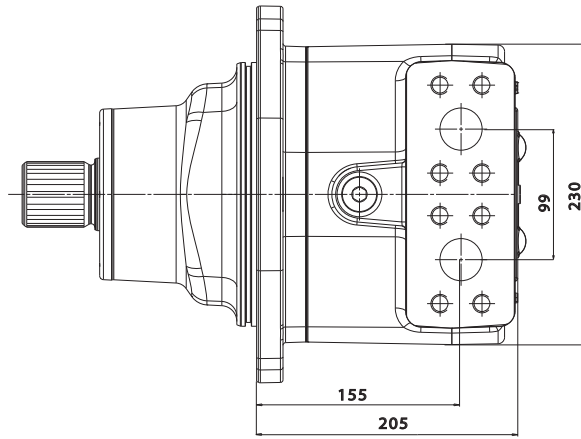
  
  

MOUNTING FLANGE		D	E	F	G	H (groove for)	I	L	M	N	O
<b>A2</b>	Standard two bolts plug-in flange	119	122,8	∅200	15	OR 4750 · 3,53x190,1	250	∅22	103	296	232



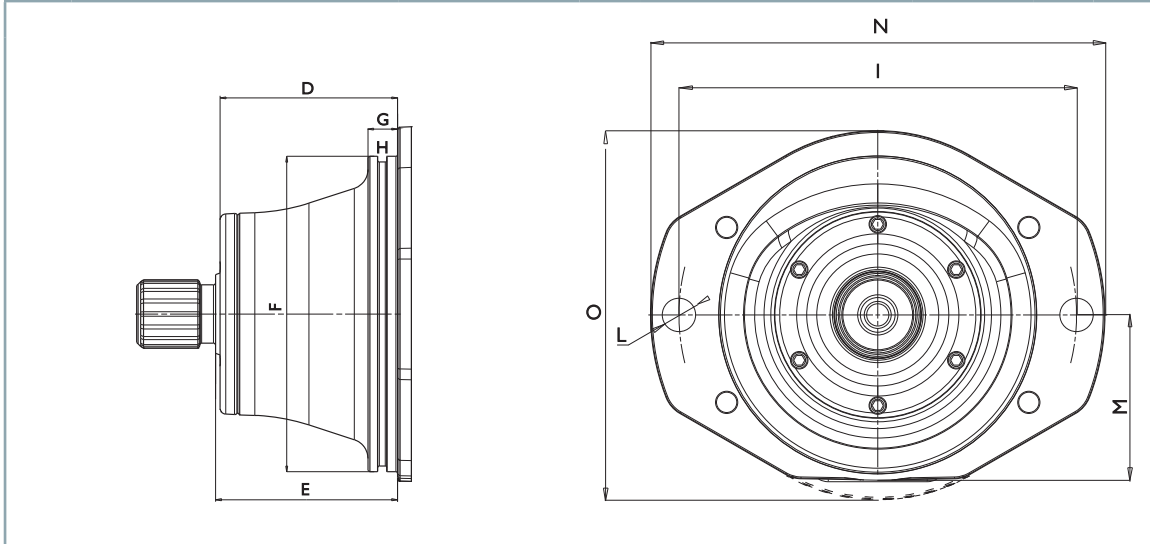
# PMH MKF

Size 180



TYPE OF SHAFT		A	B	C
<b>D45</b>	DIN5480 side fit W45x2x30x2 l x9g	Ø55	8	50
<b>D50</b>	DIN5480 side fit W50x2x30x24x9g	Ø55	8	55

MOUNTING FLANGE		D	E	F	G	H (groove for)	I	L	M	N	O
<b>A2</b>	Standard two bolts plug-in flange	119	122,8	Ø200	15	OR 4750 3,53x190,1	250	Ø22	104	286	Ø232



### SAMER services

- Design of systems with pumps and motors in closed and open circuits
- Sale of pumps and motors in closed and open circuits
- Installation and testing of pumps and motors in closed and open circuits
- Repair of pumps and motors in closed circuit and open circuit