

# Closed Circuit Piston Motors SERIES PMH M



## GENERAL INFORMATIONS

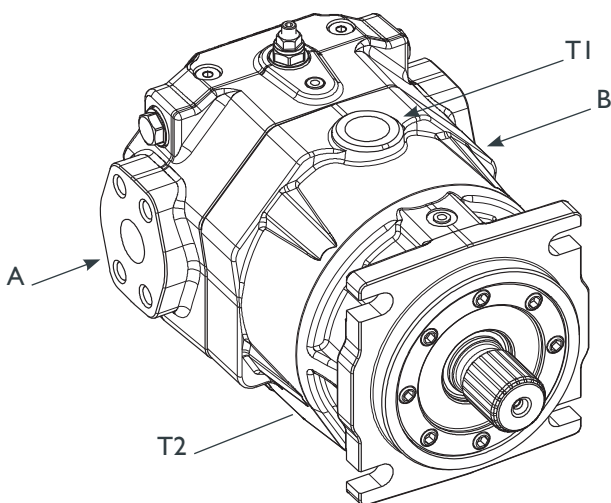
PMH M / MCF / MKF are fixed displacement motors for closed loop specifically designed to be used on heavy duty machines for traction and auxiliary functions, providing efficiency and durability.

## HIGHER PERFORMANCE

- PMH M** are flanged type motors
- PMH MCF** are flanged type motors
- PMH MKF** are plug-in type hydraulic motor

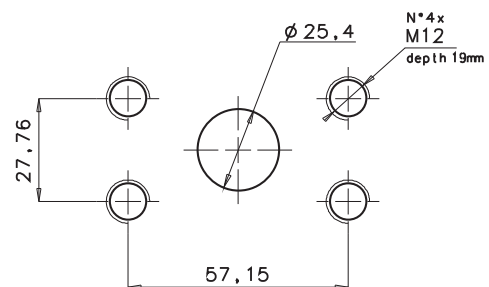
## TECHNICAL DATA

Model			M72	M90	M110
Displacement	V	cm <sup>3</sup>	72	90	110
Maximum speed	$n_{max}$	rpm	4.100	4.000	3.800
Maximum flow	$q_{max}$	l/min	295	340	400
Nominal pressure	$P_{nom}$	bar	400	400	400
Maximum pressure	$P_{max}$	bar	450	450	450
Maximum power	$P_{max}$	kW	156	180	210
Theoretical max torque	$C_{max}$	Nm	480	570	700
Weight	M	Kg	28	34	34

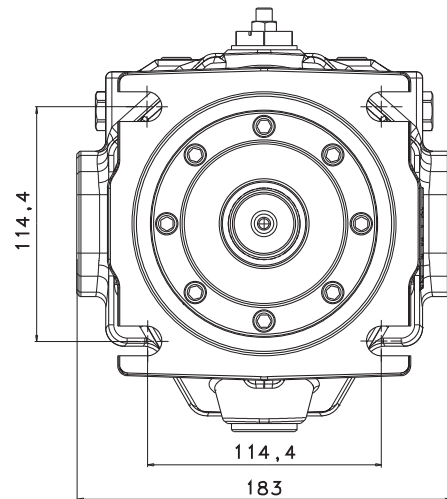
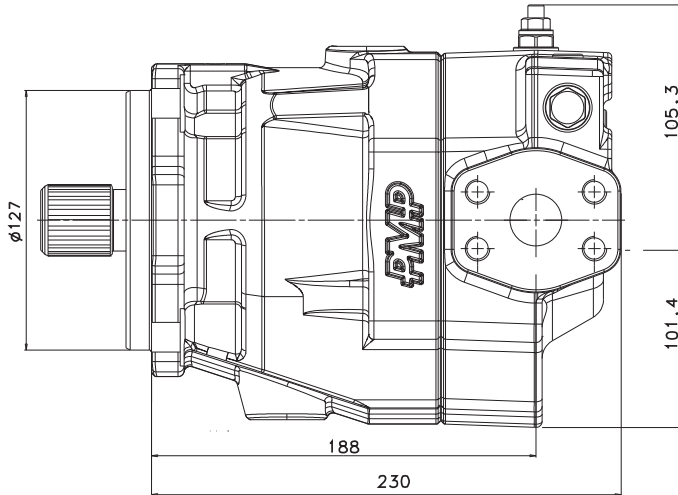


Port	Description	Standard	Size
A,B	High pressure ports	SAE J518-62	1"
T1,T2	Case drain ports	ISO 1179	3/4"

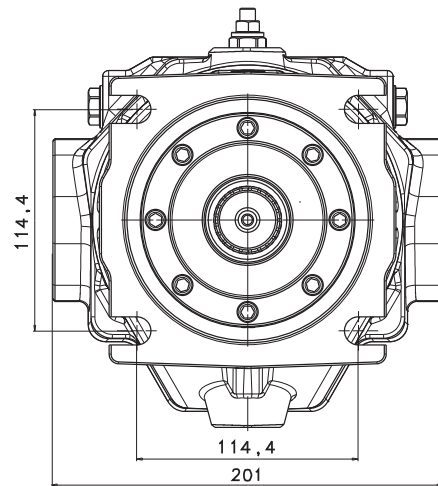
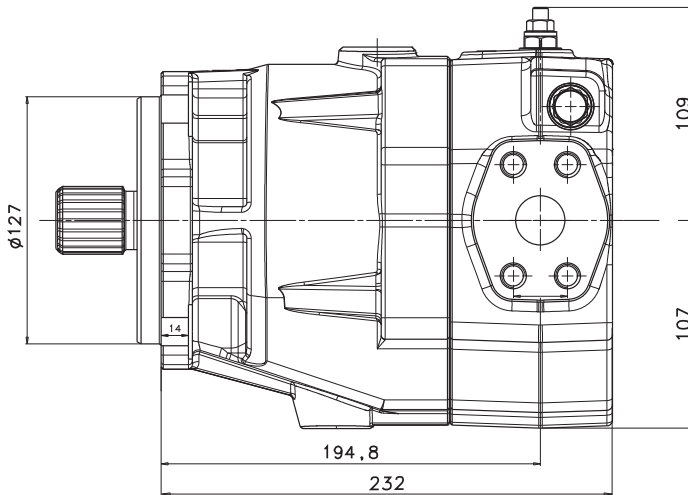
Details X - Port A/B



## Sizes 72



## Size 90 / 110



Type of shaft		Mounting flange	
<b>2IN</b>	ANSI B92.1A-1976-I 3/8" 2IT 16/32 DP	<b>C4</b>	SAEJ744 - Flange SAE C - 4 bolts

# Closed Circuit Piston Motors SERIES PMH MCF



## General informations

The PMH MCF are an evolution of the PMH M engines with multiple functions including radial doors and the possibility of mounting rpm sensors.

The construction features help to reduce friction to a minimum by increasing their efficiency.

The small size allows for easy installation.

The PMH MCF motor can be integrated with a flushing valve on the casing which allows temperature control, especially in demanding applications.

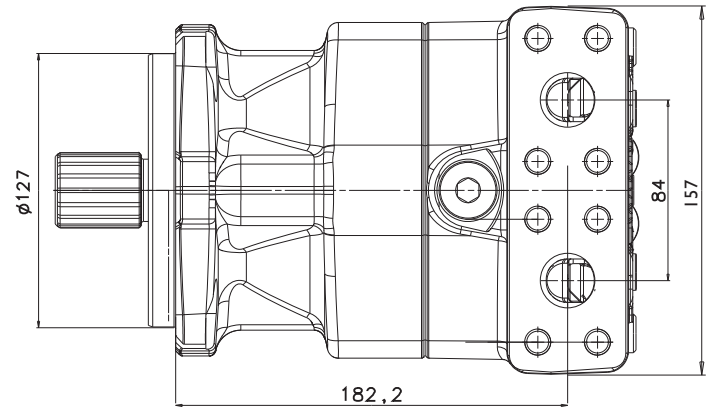
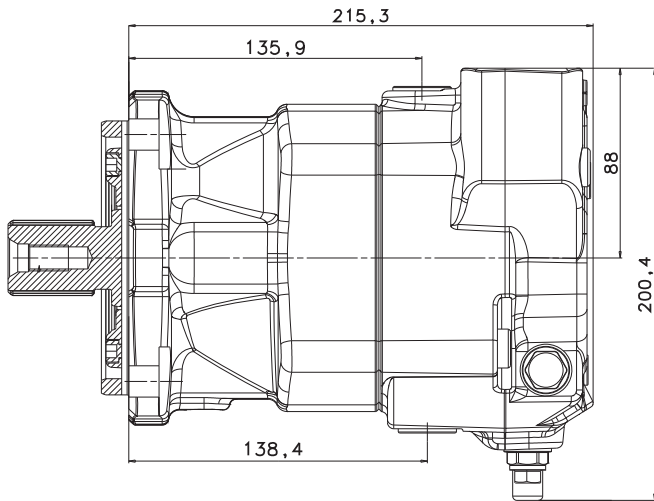
## Technical data

PMH		MCF 35	MCF 47	MCF 55	MCF 63	MCF 72	MCF 90	MCF 110
Displacement	cc/rev	35	47	55	63	72	90	110
Max output speed	rpm	4.500	4.300	4.300	4.100	4.100	4.000	3.800
Max pressure	bar	500	500	500	500	500	500	500
Max output torque	Nm	225	299	350	401	480	570	700
Weight	Kg	18	23	25	29	30	33	34

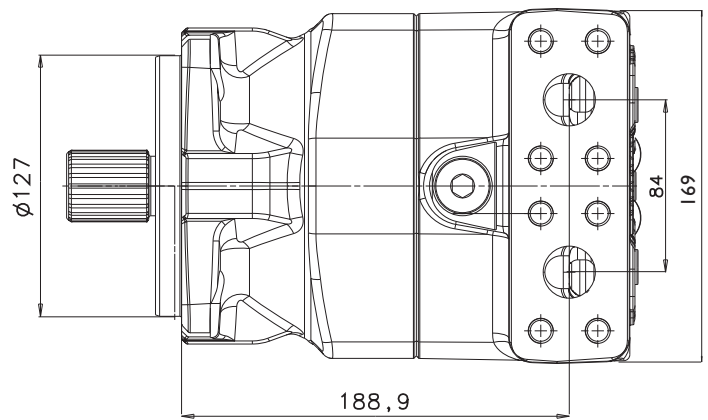
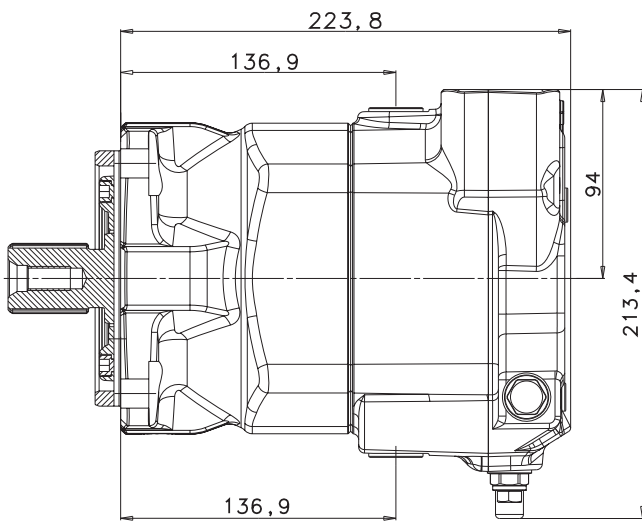
TYPE OF SHAFT		MOUNTING FLANGE	
<b>2IN</b>	ANSI B92.1A-1976-1 3/8" 2IT 16/32 DP	<b>C4</b>	SAEJ744 - Flange SAE C - 4 bolts

# PMH MCF

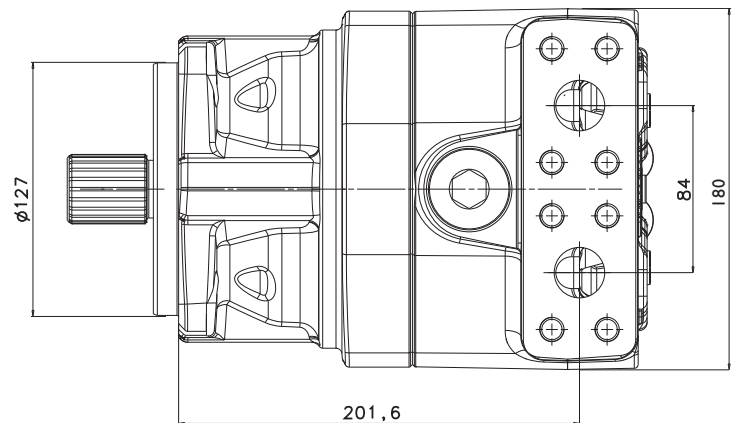
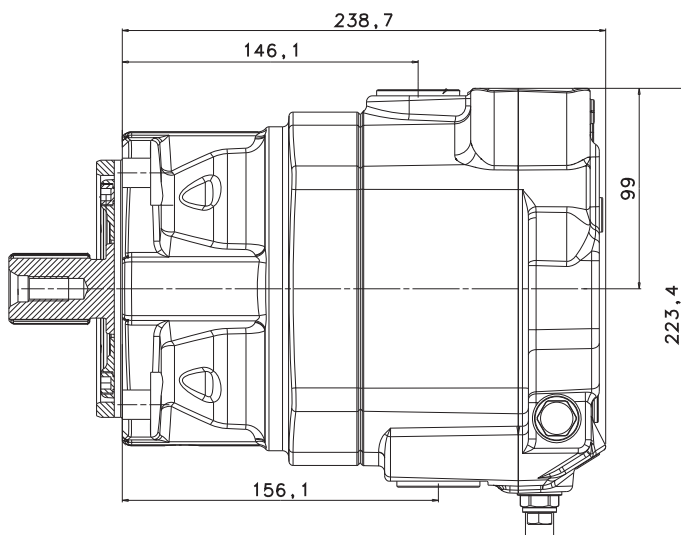
Size 55



Size 72



Size 90 / 110



## SAMER services

- Design of systems with pumps and motors in closed and open circuits
- Sale of pumps and motors in closed and open circuits
- Installation and testing of pumps and motors in closed and open circuits
- Repair of pumps and motors in closed circuit and open circuit

**SAMER S.r.l.** C.da Molino 58/C - Campofilone FM - 63828

Tel: +39 0734 340364 - 06 30818297 - Cell.+39 348 6937145

info@samer.company - www.samer.company